

SIMULATOR

Take-out Robot Simulator PAT.P

"Take-out Robot Simulator" allows users to confirm robot motion programs before actual operation.

"Take-out Robot Simulator" allows users to simulate robot motions on a screen of the controller or PC. After users add or change robot motions using motion-programming software "Flexible Teaching" or "Lead Through Teaching", they can use "Take-out Robot Simulator" to visually check if the robot moves as expected before actually operating the robot.

Features of the simulator

Checking programmed motions

This software allows operators to check the three-dimensional programmed robot motion on a screen of the controller or PC. This decreases the time required for programming as well as improving labor efficiency, assuring safety and reducing the time for setups.

Teaching

Operators can check robot motions without actually operating the take-out robot. Therefore even unskilled operators can perform teaching with ease.

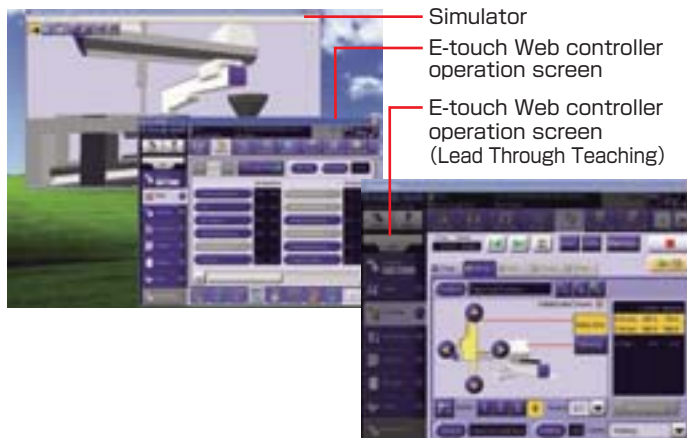


The layout on the E-touch Web

The functional features of the simulator

● 3-dimensional screen display

- ① 3-dimensional robot image moves as programmed on the screen.
- ② A molding machine can be also displayed 3-dimensionally and you can select to view the robot image only or both the take-out robot and the molding machine.



Simulator
E-touch Web controller operation screen
E-touch Web controller operation screen (Lead Through Teaching)

● PC version simulator

- ① There are 2 windows: simulator display and E-touch Web controller operation display.
- ② Perform Lead Through Teaching on PC.
- ③ Start up Flexible Teaching simultaneously to monitor (debug) programs.
- ④ The PC version simulator comes with Flexible Teaching.

● Real time monitor of input/output signal

- ① Confirm which signal is under active in real time while referring to the 3-dimensional image.
- ② Provided with a debugging function that permits the programmer to force the input signals on and off.
- ③ The monitor is displayed in the same language as one applied for the robot operation program.



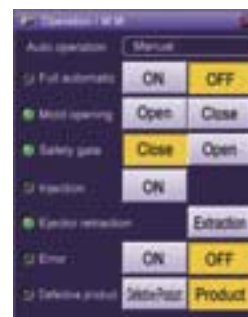
Signal monitor dialog

● Setting up operation condition of molding machine

- ① Operate a molding machine and check its operation state.
- ② Select the number of plates (2 or 3) and set the mold open width.



Molding machine parameter screen



Molding machine operation dialog screen

● Operating environment

OS	CPU	Memory
Windows Vista, XP, 2000	More than Celeron 533MHz	More than 256MB
.NET Framework 1.0 or 1.1	Graphic drawing DirectX8 or DirectX9	Screen resolution More than 800 × 600
		Color More than 65,000 color